

HELP FOR CPAP INTOLERANT PATIENTS

Talk to them about Inspire

- A small device inserted in an outpatient procedure
- Patient controlled with the Inspire sleep remote
- Cloud-based adherence monitoring



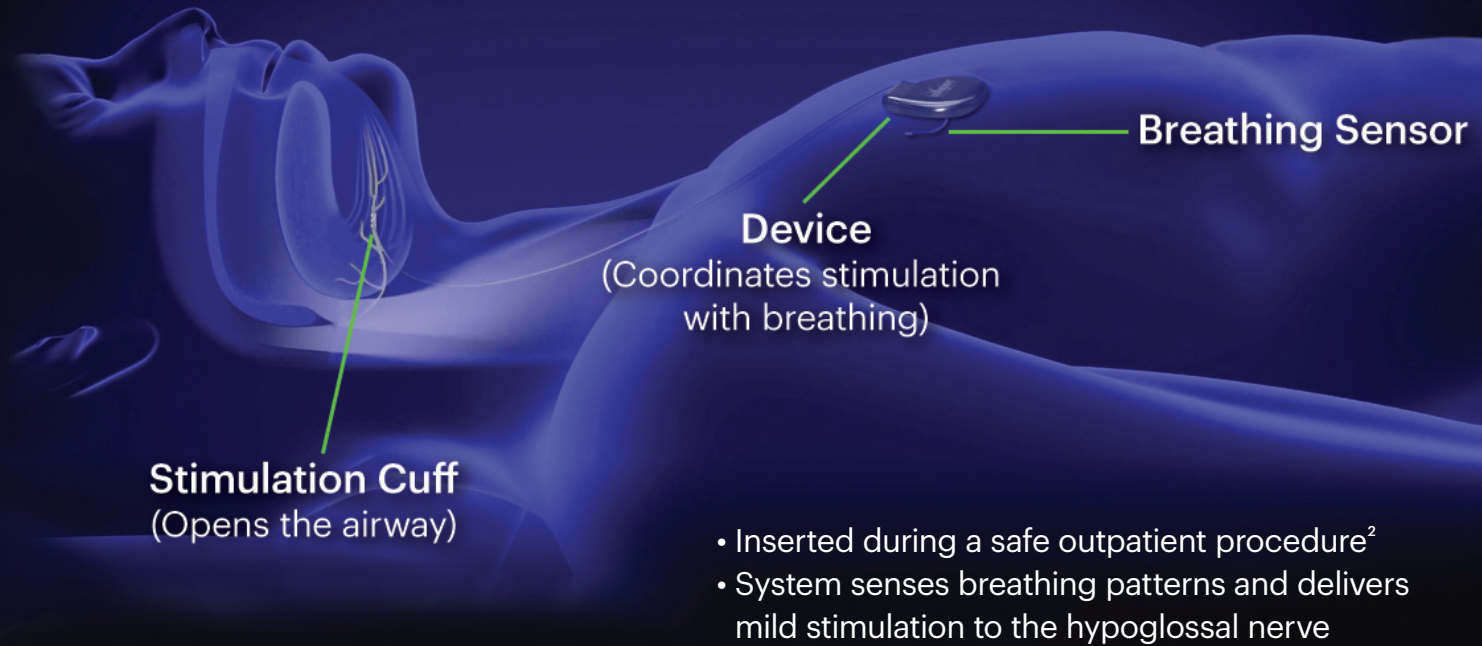
79%¹

reduction in sleep
apnea events

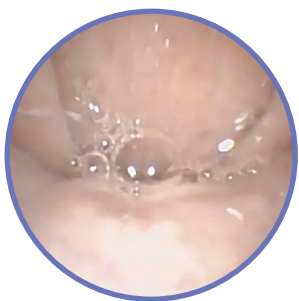
OVER 90%²

of patients are
satisfied with Inspire

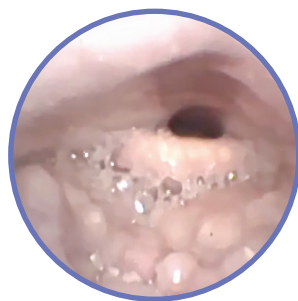
Inspire Delivers Motor Nerve Stimulation



Inspire Restores Muscle Tone & Opens The Upper Airway During Sleep

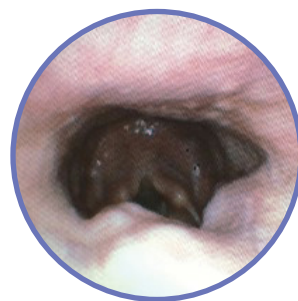


Palate



Tongue Base

Obstructed Airway



Palate

180% increase
in airway dimension



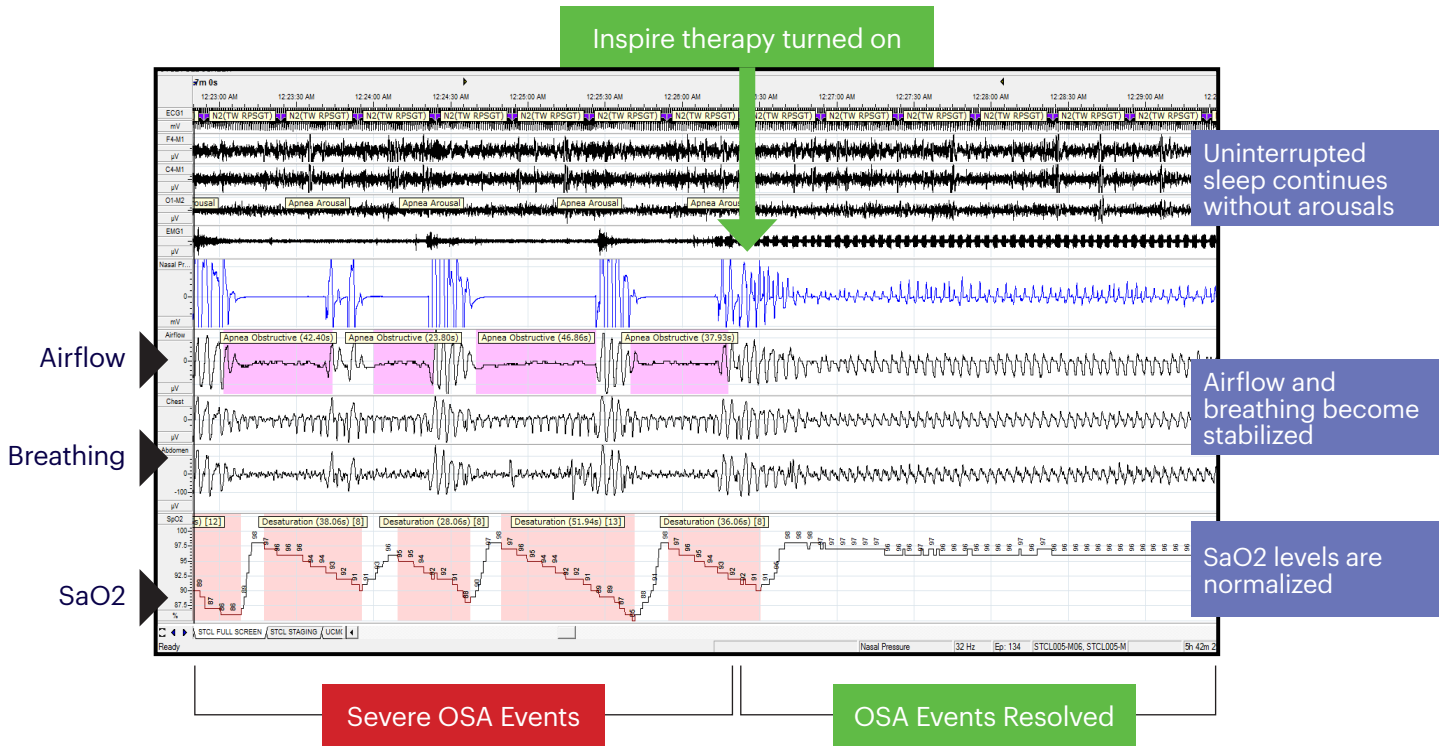
Tongue Base

130% increase
in airway dimension

Open Airway

At therapeutic titrated levels, Inspire therapy prevents the airway from collapsing to facilitate unobstructed breathing

Stimulation Effect During Sleep



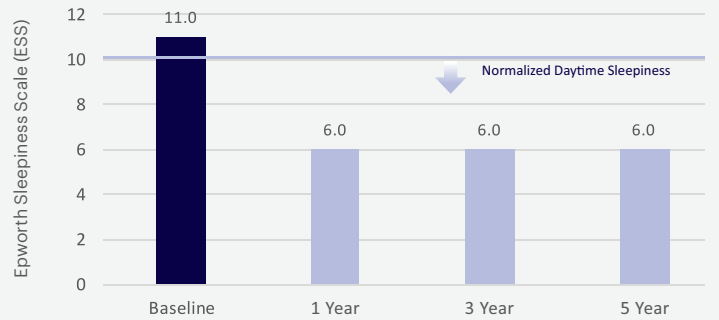
Inspire Workflow Mirrors CPAP



Sustained Clinical Results

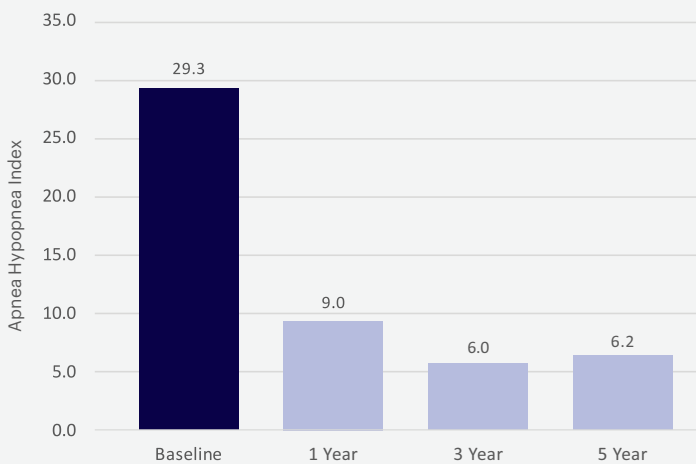


Significant decrease in daytime sleepiness¹



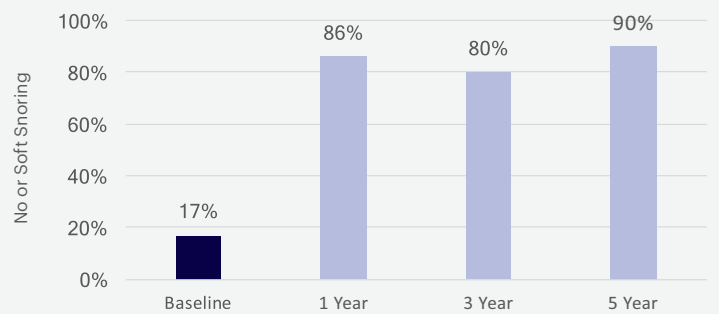
All p values < 0.01 vs. baseline. Results in median.

Significant decrease in apnea events maintained over 5yrs¹



Significant reduction in snoring¹

% of Bed Partners Reporting No or Soft Snoring



Over 150 peer-reviewed publications

- STAR Trial; 5-Year follow-up data
- ADHERE Registry; Over 2,500 enrolled

Many of your patients may be eligible for Inspire

- Moderate to severe OSA (AHI 15-65 with <25% central and mixed apnea)
- Unable to get consistent CPAP benefit
- Not significantly obese



For complete indications, contraindications, and important safety information visit:
Professionals.InspireSleep.com

Inspire is not for everyone. It is a surgically implanted system that is intended to treat obstructive sleep apnea in patients who are not effectively treated by, or able to tolerate CPAP. Talk to your patient about risks, benefits and expectations associated with Inspire. Risks associated with the surgical implant procedure may include infection and temporary tongue weakness. In rare cases tongue paresis and atrophy may occur. Some patients may require post implant adjustments to the system's settings in order to improve effectiveness and ease any initial discomfort they may experience. Important safety information and product manuals can be found at inspiresleep.com/safety-information/ or call 1-844-OSA-HELP.

¹1-year STAR data: Strollo et al., NEJM 2014 ²Suurna et al, Laryngoscope 2021 ³Woodson et al., OTO-HNS 2018

© 2022 Inspire Medical Systems. All Rights Reserved. 800-255-013 Rev A